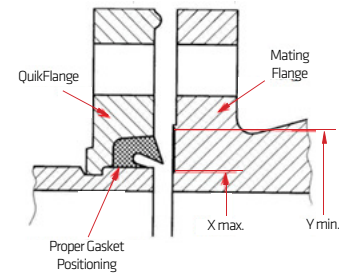
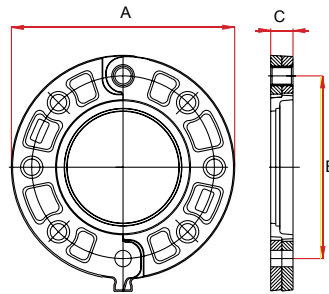


QUIKFLANGE™ / Style 90



STYLE 90 QUIKFLANGE™

QUIKFLANGE™ two-piece hinged casing groove-to-flange adaptor is designed for direct connection of ANSI class 125,150 and ISO 7005-1 class PN10/16 standards flanged components into a grooved pipe system.

The hole-spacing is standard and enable standard flanged items to be easily and rapidly assembled to the grooved pipe. The hinged halves are drawn together into the pipe end-groove with a built-in arrangement especially required when the pipe end is out-of-round.

The unique design of the gasket inserted into the QUIKFLANGE™ ensures a closed seal between the pipe and the mating flange face.

QUIKFLANGE™ provides a rigid joint when all bolts have been tightened.

For special applications where the mating flange faces are not hard and smooth, use metal flange "washer plates". Please contact the factory for details.

Maximum working pressure: Acc. to standard
For fire protection equipment and approved pressure ratings please contact Modgal.

Nominal Size (Inches / DN)	Pipe Outside Diameter	Flange Dimensions			Sealing surface		Standard			Bolts		Weight Lbs	Approvals
		A	B	C	X (max.)	Y (min.)	ISO 7005-2	BSTD	ANSI	Qty.	Size		
2" / 50	2,375	6.50	4.92	0.79	2.36	3.39	PN10 / PN16	-	-	4	M16	3.88	FM / UL / VDS
2" / 50	2,375	6.02	4.74	0.91	2.36	3.39	-	-	ASA150	4	¾"	3.31	FM / UL
2½" / 65	2,875	7.01	5.50	0.75	2.99	4.02	-	-	ASA150	4	¾"	3.31	FM / UL
3" OD	3,000	7.28	5.71	0.87	2.99	4.02	PN10 / PN16	-	-	4	M16	5.29	FM / UL / VDS
3" / 80	3,500	7.40	5.75	0.79	3.50	4.53	-	16 Bar	-	4	¾"	4.41	FM / UL
3" / 80	3,500	7.50	6.00	0.94	3.50	4.53	-	-	ASA150	4	¾"	5.64	FM / UL
3" / 80	3,500	7.87	6.30	0.79	3.50	4.53	PN10 / PN16	-	-	8	M16	5.84	FM / UL / VDS
4" / 100	4,500	9.02	7.50	0.94	4.49	5.55	-	-	ASA150	8	¾"	7.72	FM / UL
4" / 100	4,500	8.66	7.09	0.87	4.49	5.55	PN10 / PN16	-	-	8	M16	6.57	FM / UL / VDS
5" OD	5,500	9.92	8.27	0.94	5.51	6.69	PN10 / PN16	-	-	8	M16	9.17	VDS
5" / 125	-	-	-	-	-	-	-	-	-	-	-	-	-
6" / 150	6,625	11.14	9.45	1.00	6.61	7.80	PN10 / PN16	-	-	8	M20	11.22	FM / UL / VDS
6" / 150	6,625	11.14	9.45	1.00	6.61	7.80	-	-	ASA150	8	¾"	11.22	FM / UL
8" / 200	8,625	13.46	11.75	1.18	8.62	9.92	-	-	ASA150	8	¾"	16.96	FM / UL
8" / 200	8,625	13.50	11.61	1.10	8.62	9.92	PN16	-	-	12	M20	17.64	FM / UL / VDS

FITTINGS / Style 42 - 91

GROOVED-END FITTINGS

Maximum working pressure: 500 psi
For fire protection equipment and approved pressure ratings please contact Modgal.

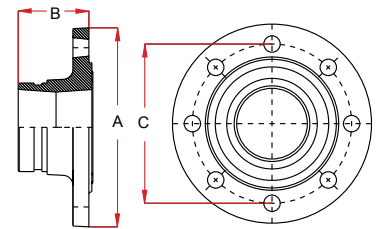
STYLE 42

Elbow 22½°



STYLE 91

Grooved Flange Adaptor



Nominal Size (Inches / DN)	Pipe Outside Diameter	Dimen- sion	Weight Lbs	Approvals
		A		
1¼" / 32	1.660	1.77	0.66	-
1½" / 40	1.900	1.77	0.75	FM
2" / 50	2.375	1.89	1.17	FM
2½" / 65	2.875	2.01	1.83	FM
3" OD	3,000	2.01	1.83	FM
3" / 80	3.500	2.24	2.43	FM
4" / 100	4.500	2.87	4.19	FM
5" OD	5.500	3.11	6.17	FM
5" / 125	5.563	2.87	6.17	FM
6" / 150	6.625	3.11	10.45	FM
8" / 200	8.625	3.86	16.32	FM

Nominal Size (Inches / DN)	Pipe Outside Diameter	Dimensions			Standards		Bolts		Weight Lbs	Approvals
		A	B	C	ISO 7005-2	ANSI	Qty.	Size		
2" / 50	2.375	6.50	2.56	4.75	PN10 PN16	-	4	M16	3.31	FM / UL / VDS
2½" / 65	2.875	7.28	2.44	5.50	-	ASA 150	4	5/8"	4.08	UL
3" OD	3,000	7.28	2.56	5.50	PN10 PN16	-	4	M16	3.35	FM / UL / VDS
3" / 80	3.500	7.87	2.56	6.00	PN10 PN16	-	8	M16	8.33	FM / UL / VDS
3" / 80	3.500	7.56	2.80	6.00	-	ASA 150	4	5/8"	8.29	FM / UL
4" / 100	4.500	9.02	3.90	7.50	-	ASA 150	8	5/8"	14.55	FM / UL
4" / 100	4.500	9.01	2.76	7.50	PN10 PN16	-	8	M16	12.57	FM / UL / VDS
5" OD	5.500	9.84	2.76	8.50	PN10 PN16	-	8	M16	12.57	FM / UL / VDS
5" / 125	5.563	9.84	2.76	8.50	-	ASA 150	8	M16	12.57	-
6" / 150	6.625	11.18	2.68	9.45	-	ASA 150	8	¾"	22.27	FM / UL
6" / 150	6.625	11.10	2.76	9.50	PN10 PN16	-	8	M20	22.27	FM / UL / VDS
8" / 200	8.625	13.39	3.15	11.75	PN16	-	12	M20	38.80	FM / UL / VDS
8" / 200	8.625	13.50	4.27	11.61	-	ASA 150	8	¾"	26.68	FM / UL

For use with higher than stated maximum working pressure, please contact Modgal Metal.