



# Centrifugal Pumps

## CN series

### Standard design

Closed coupled single-stage centrifugal pumps. A range of 3 models with open impellers, independent shafts and IEC standard motors.

Optimised design to ensure high levels of hygiene - The absence of product hold-up and no dead-legs ensures efficient cleaning by standard CIP methods and effective sterilisation by SIP.

Wetted parts are in forged polished plate and investment cast electropolished CF3M 1.4409 / AISI 316L (1.4404) stainless steel.

Investment cast and electro-chemical polishing. Internal finishes of 0,5 micron Ra are available on request.

Flow rates up to 75 m<sup>3</sup>/h, heads of more than 60 m.  
Maximum inlet pressure : 4 bar.  
Temperature range: -10°C to 120°C.

### Seals:

Hygienic mechanical seals with seats to EN 12756, ISO 3069 standards.

### Elastomers (certified to US FDA):

EPDM  
Fluorocarbon (Viton)  
Silicone  
P.T.F.E. (FEP)

### Connections:

DIN - SMS - IDF - BS / RJT - DS - CLAMP and EN 1092-1 PN16 flanges and on request available for other international standards.

### Applications

Food processing, dairy, beverage, chemical, cosmetics and pharmaceutical industries. The open impeller allows a large range of products such as purified water, juices, creams, ice-cream mix, milk, wine, spirits, whey and WFI to be safely transferred.



Pump with shroud and stainless steel adjustable feet.

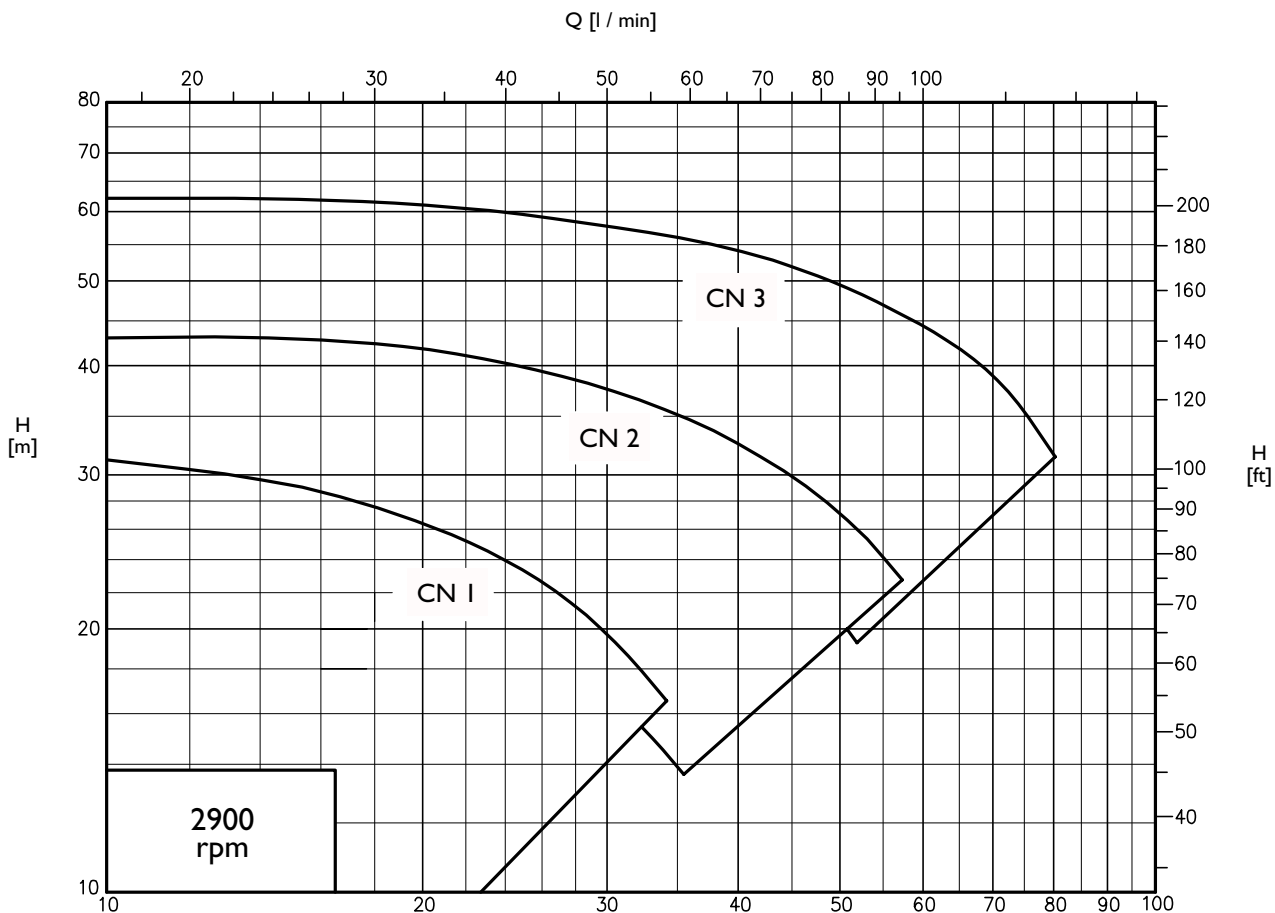


Pump with B34-B35 motor and stainless steel motor shims.



Open impeller with reversed blades with vast expansion designed to optimize the hydraulic efficiency.

# CN GENERAL DIAGRAM

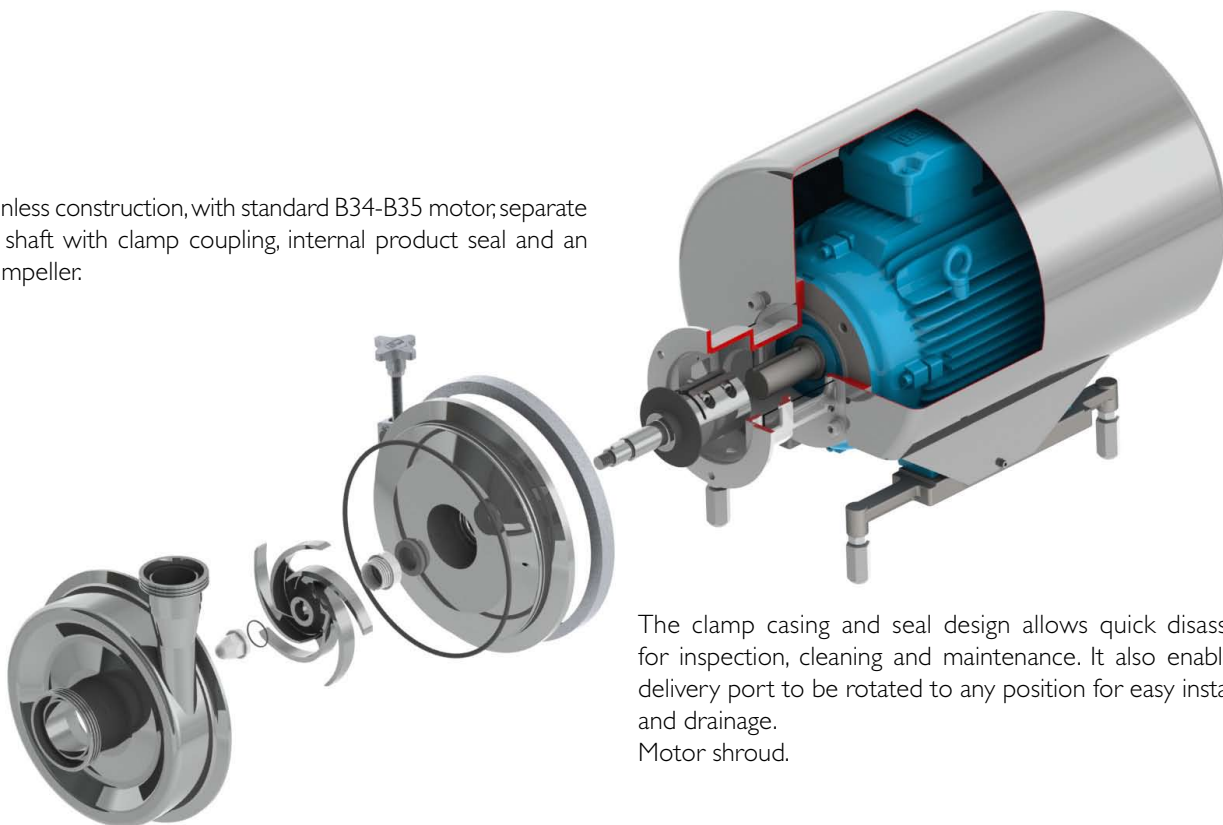


Performance applies to H<sub>2</sub>O at 20 °C, 1013 millibar

Q [m<sup>3</sup> / h]

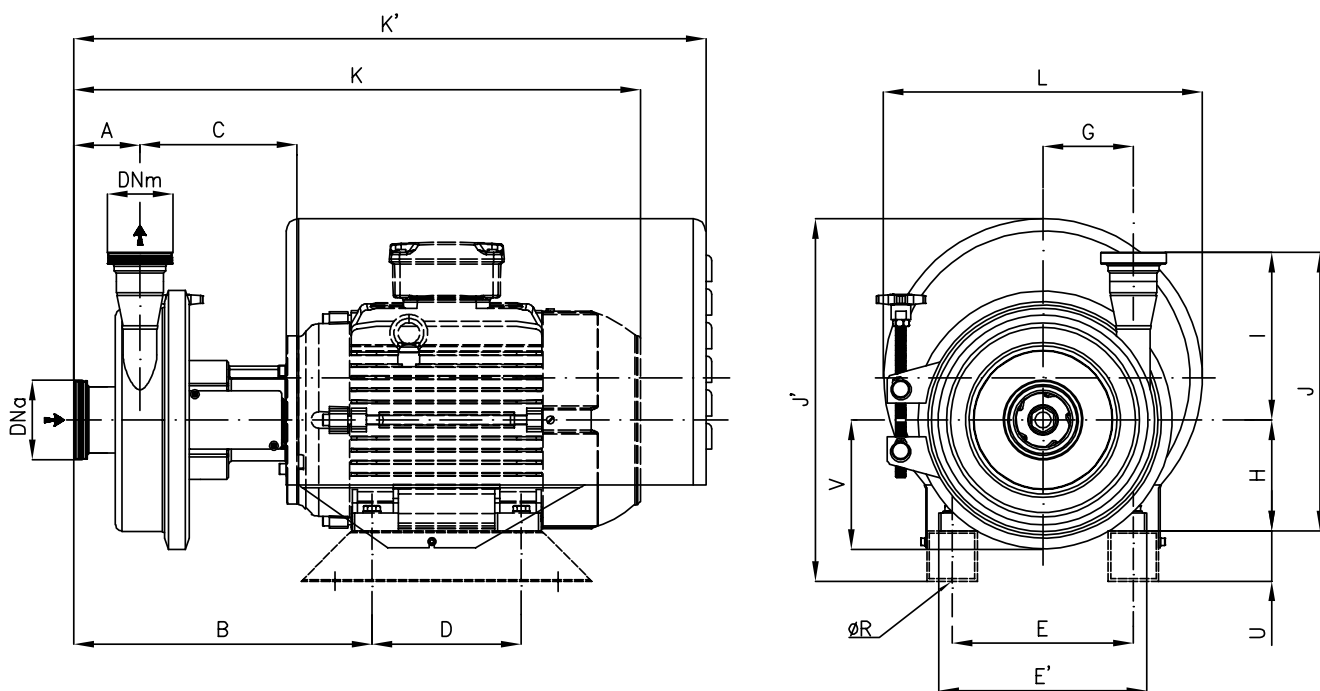
Data not binding.

All stainless construction, with standard B34-B35 motor; separate pump shaft with clamp coupling, internal product seal and an open impeller:



The clamp casing and seal design allows quick disassembly for inspection, cleaning and maintenance. It also enables the delivery port to be rotated to any position for easy installation and drainage.  
Motor shroud.

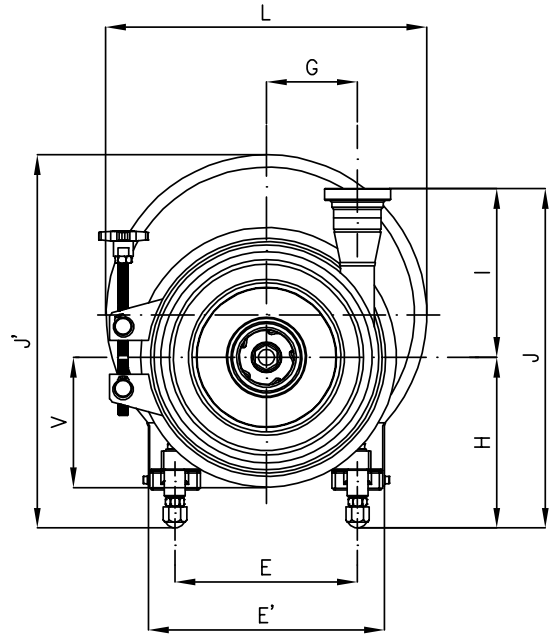
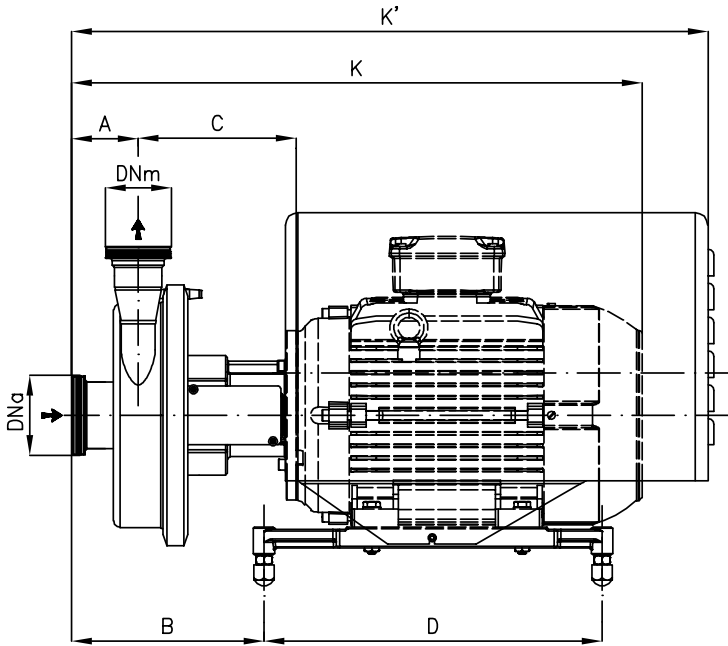
# OVERALL DIMENSIONS



Dimensions not binding - DN = DIN 11851 male threaded connections with standard IEC/EN motors

Pumps	kW	DNa	DNm	A	B	C	D	E	E'	G	H	K	K'	ØR	I	J	J'	L	U	V	Weight kg
CN 1	1,5 2,2	50	40	73	282,5	153,5	100	140	165	86	90	501	597	10	183	273	318	303	40	127	
CN 1	3 4				319,5	183,5	140	160 190	196 226		100 112	572 591	673	12		283 295	389 402	369	50		
CN 1	5,5 7,5				357,5	183,5	178	216	256		132	627	744	12		315	412	380	60		
CN 2	1,5 2,2	65	50	79	292	157	100	140	165	108	90	508	606	10	200	290	317	303	40	154	
CN 2	3 4				329	187	140	160 190	196 226		100 112	580 598	683	12		300 312	388 400	369	50		
CN 2	5,5 7,5				355	187	178	216	256		132	635 673	753	12		332	432	380	60		
CN 2	9,2				404	217	254	254	300		160	778	911	15		360	528	473	50		
CN 2	11 15 18,5																				
CN 3	5,5 7,5	80	65	81	358,5	188,5	178	216	256	129	132	640	757	12	255	387	432	380	60	179	
CN 3	11 15				407,5	218,5	254	254	300		160	784	915	15		415	588	473	50		

# OVERALL DIMENSIONS



Dimensions not binding - DN = DIN 11851 male threaded connections with standard IEC/EN motors

Pumps	kW	DNa	DNm	A	B	C	D	E	E'	G	H	K	K'	I	J	J'	L	V	Weight kg
CN 1	1,5 2,2	50	40	73	210	153,5	270	138	213	86	160	501	597	183	343	348	303	127	
CN 1	3 4				247 239	183,5	285 315	150 180	243		170 182	572 591	673		353 365	409 422	369		
CN 1	5,5 7,5				218	183,5	400	216	279		202	627	744		385	425	380		
CN 2	1,5 2,2	65	50	79	219	157	270	140	213	108	185	508	606	200	385	372	303	154	
CN 2	3 4				257 249	187	285 315	150 180	243		194 206	580 598	683		394 406	433 445	369		
CN 2	5,5 7,5 9,2				228	187	400	216	279		202	635 673	753		402	442	380		
CN2	11 15 18,5	80	65	81	249	217	475	270	333	129	211	778	911	255	411	528	473	179	
CN 3	5,5 7,5				198,5	188,5	400	216	279		227	640	757		482	467	380		
CN 3	11 15				217,5	218,5	475	270	333		211	784	915		466	528	473		



**CSF Inox S.p.A.** Strada per Bibbiano, 7 - 42027 Montecchio E. (RE) - ITALY EU  
Ph +39.0522.869911 ra. - Fx +39.0522.865454 / 866758 - csfitalia@csf.it - www.csf.it

**Export Department • Commercial Étranger • Comercial Extranjero**  
Ph +39.0522.869922 - Fx +39.0522.869841 - csfexport@csf.it - www.csf.it

All the instructions, data and representations (in whatever way executed) listed in this publication are indicative and do not binding. CSF does not stand surety or undertake any obligation for the utilisation of this document and for the information contained. In particular, it does not guarantee against omissions or errors of the data and drawings here indicated.  
Notice that the technical specifications, information and representations in this document are merely indicative and approximate. CSF INOX reserves the right at any moment and without notice to modify the data, drawings and information indicated in this document.