



BH-1

STRAIGHT SINGLE CLAPPER TWO-WAY INLETS

An exposed auxiliary inlet connection with 500 G.P.M. inlet capacity to supplement fire protection water supply. Exposed design provides an economical method of satisfying Fire Dept. inlet requirements.

Standard equipment:

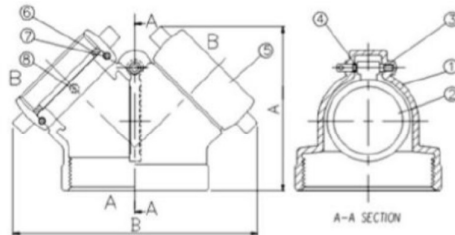
Cast brass two-way inlet body only with single swing clapper and pin or rocker lug hose thread swivel; angle NPT outlet connection.

Branding:

"AUTO SPKR"

Optional Finishes:

RP - Red Painted



Specs:	
Size:	4" IPS Outlet(2)
	2 1/2" NST
	Swivel Inlets
Swivels:	2 1/2" NST PL
	BCT
	ONT
	OST
	PHX
	TEM
	CLV

		4 x 2"
A		5-33/64"
B		8-5/64"



BH-2 90° Single Clapper Two-Way Inlets