

FEKALIFT

SMALL LIFTING STATIONS FOR AUTOMATIC COLLECTING AND PUMPING SEWAGE

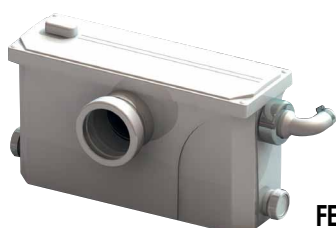
WASTE WATER



FEKALIFT 100 - WC



FEKALIFT 300 - WC



FEKALIFT 200
WC - SINK

Small lifting stations for automatic collecting and pumping sewage. Its use is necessary whenever the waste water can not be expelled by gravity. The lifting station is mounted directly behind the WC and is therefore unaffected by the type of waste piping and unions.

This lifting station can be used wherever an additional toilet is required during new building work, renovations and structural modifications. Depending on the model, a shower, bidet and washbasin can be connected together with the WC.

The inflow water from the sanitary ware connected to the system automatically turns on the Fekalift 100/200 when there is an increase in the water level of approximately 8 cm and is automatically turned off when the level drops by approximately 3 cm. The solids and excrement that arrive from the toilet are chopped and forced into the general waste pipe through the pressure pipe. The Fekalift 100/200 can be connected to any European standards WC with horizontal waste. At least 6 litres of water must be available each time flushing is performed. Water saving push button flushes are advised.

The appealing design, technical innovation and manufacturing quality make FEKALIFT an indispensable item for the fitting of a supplementary toilet, above or below the backwater level (based on the DIN 1986

standard).

The Fekalift 100 and Fekalift 200 systems are suitable for water temperatures up to 60°C and are resistant to slightly acidic substances. Avoid the discharge of water containing greasy or oily substances into the Fekalift 100 and Fekalift 200.

The motor, powerful yet noiseless, the pump and the grinding device are made of stainless steel.

The integrated pump purifying system makes the station practically maintenance free.

Easy to install, it is also designed for connection of a shower base with 12 cm drain height.

The forced side duct with built-in no-return valve allows the cover to be removed without having to remove the delivery pipe.

Power input: 1x230 V~ 50 Hz.

Insulation class: B.

Speed of rotation: 3000 1/min.

Operation: automatic.

Approval: VDE - GS.

Built to: DIN 19762.

Capacity: 11 lt (Fekalift 100A).

16 lt (Fekalift 200A).

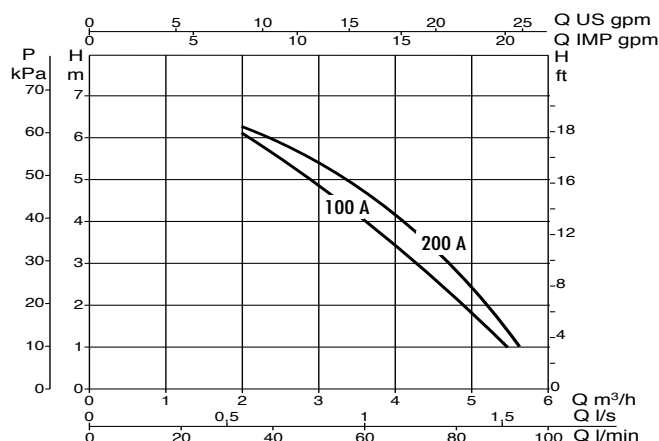
11 lt (Fekalift 300A).

Protection level: IP44.

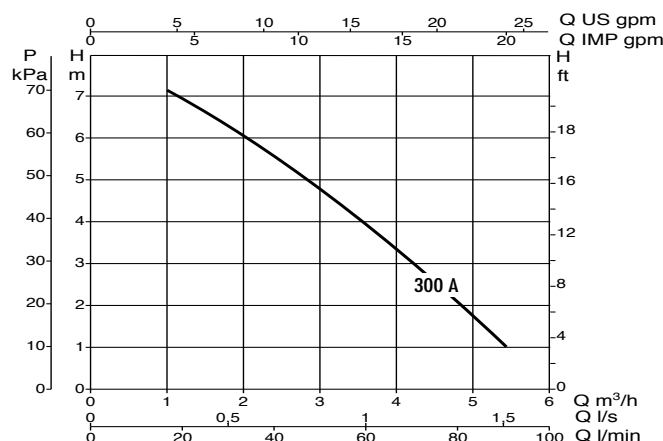
TECHNICAL DATA

MODEL	CODE	ELECTRICAL DATA			
		VOLTAGE 50 HZ	P2 NOMINAL		IN A
			KW	HP	
FEKALIFT 100 - A	60124298	1 x 230V ~	0,4	0,55	1,9
FEKALIFT 200 - A	60124299	1 x 230V ~	0,4	0,55	1,9
FEKALIFT 300 - A	60124300	1 x 230V ~	0,4	0,55	1,8

FEKALIFT 100A - 200A

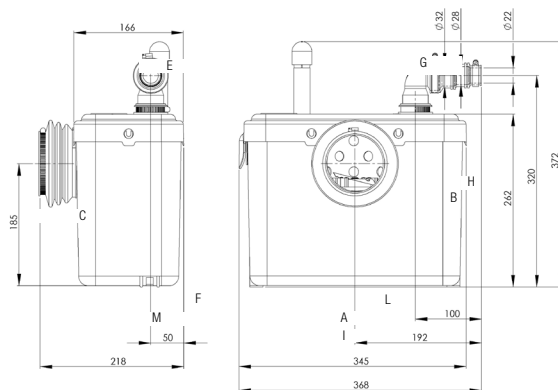


FEKALIFT 300A

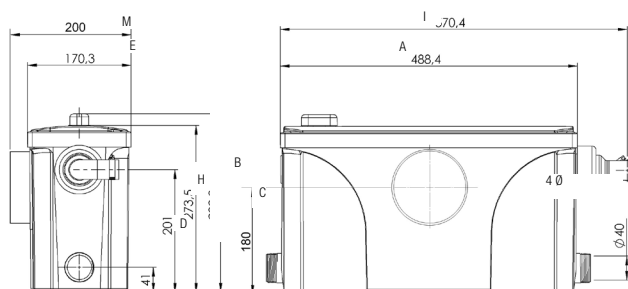


DIMENSIONS AND WEIGHTS

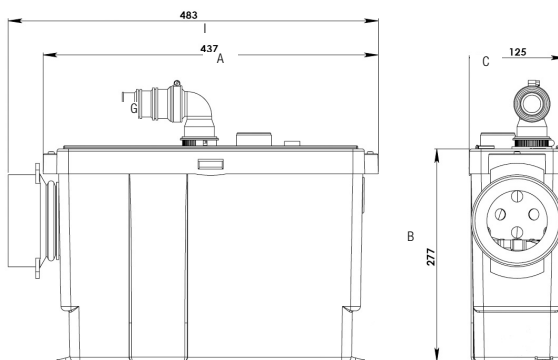
FEKALIFT 100A



FEKALIFT 200A



FEKALIFT 300A



MODEL	A	B	C	D	E	F	GØ	H	I	L	M	DNM MM	WEIGHT KG
FEKALIFT 100A	345	262	185	13	166	50	DN22/DN28/DN32	320	368	192	218	22/28/32	5,8
FEKALIFT 200A	488	292	180	41	170		40	201	570		200	28	7,5
FEKALIFT 300A	437	277	125				DN22/DN28/DN32		463			22/28/32	7