

# POSITIVE SINUSOIDAL DISPLACEMENT PUMPS

SERIES SCN





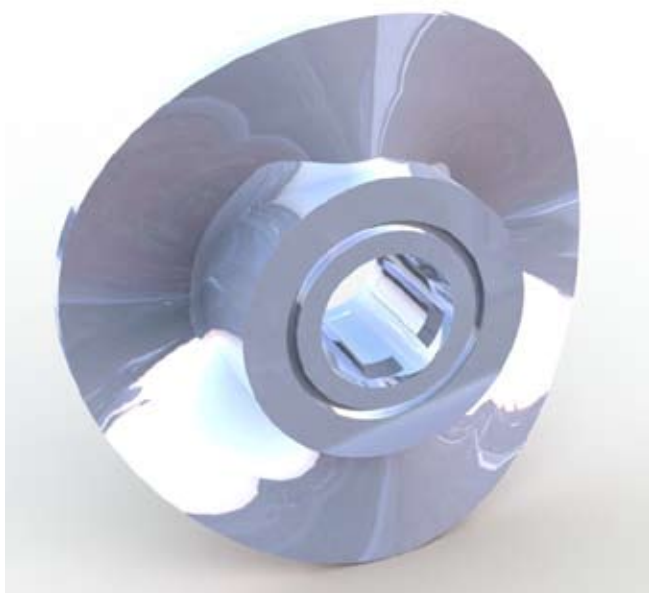
**PUMP CASING** with a circular section, made from solid bar in AISI 316L.

Connections:

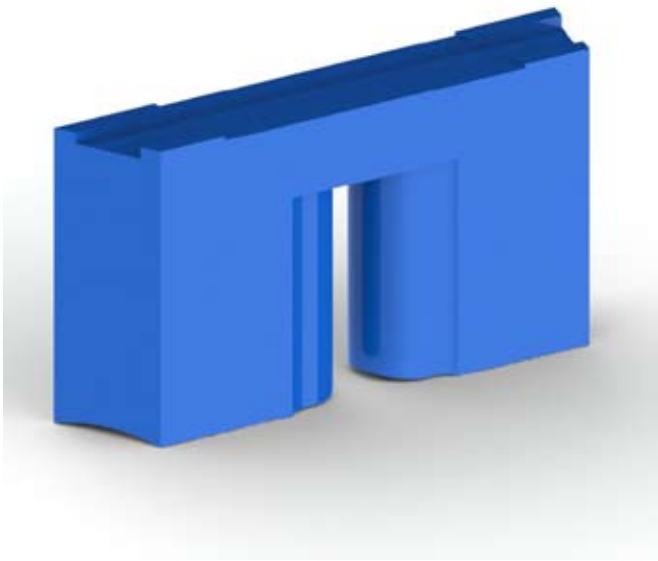
DIN - SMS - IDF - BS / RJT - DS - CLAMP and EN 1092-1 PN16 flanges to suit most international standards.



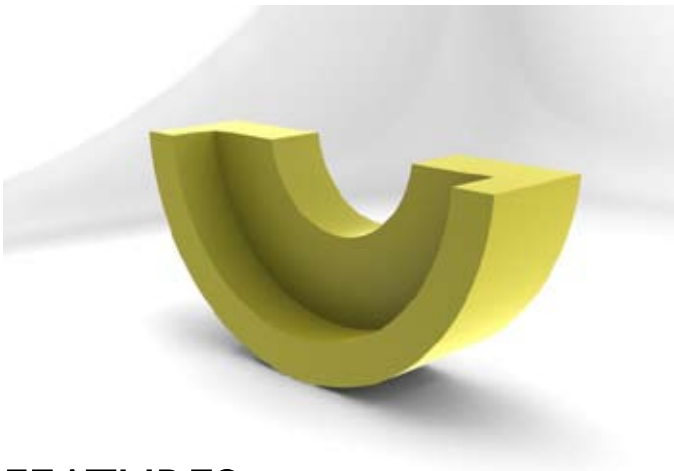
**CASING COVER** made from solid bar in Aisi 316L.



**SINUSOIDAL ROTOR** shaped with CNC machines, guaranteeing shape and dimensions, in Aisi 316L.



**SCRAPERGATE** in different materials to optimise compatibility, duration and tightness.



**STATORS:** internal components to house the rotor. In different materials for coupling to the scrapers.

## FEATURES

Variable speed positive displacement pumps to adapt to product features and performances.

The low pulsation levels allow a linear and constant transfer without any foam with excellent performances and no vibrations.

Constant performances in relation to products with different viscosities.

A wide range of materials and drives are available according to requirements and to the products to be pumped.

Flow rates 38 m<sup>3</sup>/h

Max pressures 15 bar

Max. temp. 130°C

Suction capability up to 0,8 bar

# SCN PUMPS Applications



Canning and Agri-food



Fruits and Vegetables



Milk and Dairy



Miscellaneous



Cosmetics



Water and Soft drinks



Beer and Liquors



Wine and Oil



**CSF Inox S.p.A.** Strada per Bibbiano, 7 - 42027 Montecchio E. (RE) - ITALY EU  
Ph +39.0522.869911 | r.a. - Fx +39.0522.865454 / 866758 - [csfitalia@csf.it](mailto:csfitalia@csf.it) - [www.csf.it](http://www.csf.it)

**Export Department • Commercial Étranger • Comercial Extranjero**  
Ph +39.0522.869922 - Fx +39.0522.869841 - [csfexport@csf.it](mailto:csfexport@csf.it) - [www.csf.it](http://www.csf.it)

All the instructions, data and representations (in whatever way executed) listed in this publication are indicative and do not bind. CSF does not stand surety or undertake any obligation for the utilisation of this document and for the information contained. In particular, it does not guarantee against omissions or errors of the data and drawings here indicated. Notice that the technical specifications, information and representations in this document are merely indicative and approximate. CSF INOX reserves the right at any moment and without notice to modify the data, drawings and information indicated in this document.